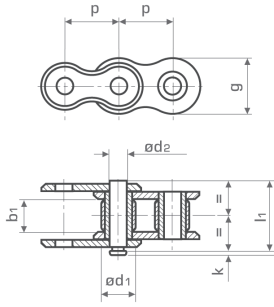


Rollenketten nach DIN - rostfrei

Roller Chains to DIN - Stainless Steel

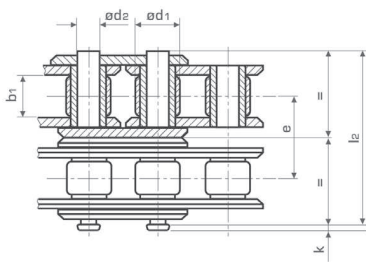


DIN-Simplex | DIN-Simplex  
rostfrei 1.4301 | stainless 1.4301

DIN 8187-ISO/R 606

Bestell Nr. Part No.  
Kette Versch. Gekr. Glieder  
Glieder einfach  
Chain Connec. Cranked link  
link single

ISO-No.	p x b <sub>1</sub> [inch]	[mm]	d <sub>1</sub>	d <sub>2</sub>	e	l <sub>max</sub>	k <sub>max</sub>	g <sub>max</sub>	[kN <sub>min</sub> ]*	*[kg/m]	Bestell Nr.	Versch. Glieder	Part No.	
		8,0 x	3,0	5,0	2,31		8,6	3,1	7,11	4,0	0,18	300-081-600	-601	
	3/8 x 7/32	9,525 x	5,72	6,35	3,28		13,5	3,3	8,26	7,0	0,41	300-101-600	-601	-641
	1/2 x 1/8	12,7 x	3,3	7,75	3,66		10,2	1,5	9,91	7,0	0,28	300-211-600	-601	-641
	1/2 x 3/16	12,7 x	4,88	7,75	3,66		11,2	1,5	9,90	7,0	0,33	300-231-600	-601	-641
	1/2 x 5/16	12,7 x	7,75	8,51	4,45		17,0	3,9	11,81	12,0	0,70	300-201-600	-601	-641
	5/8 x 3/8	15,875 x	9,65	10,16	5,08		19,6	4,1	14,73	14,5	0,95	300-301-600	-601	-641
	3/4 x 7/16	19,05 x	11,68	12,07	5,72		22,7	4,6	16,13	18,5	1,25	300-401-600	-601	-641
	1 x 17	25,4 x	17,02	15,88	8,28		36,1	5,4	21,08	40,0	2,70	300-501-600	-601	-641



DIN-Duplex | DIN-Duplex  
rostfrei 1.4301 | stainless 1.4301

DIN 8187-ISO/R 606

Bestell Nr. Part No.  
Kette Versch. Gekr. Glieder  
Glieder einfach  
Chain Connec. Cranked link  
link single

ISO-No.	p x b <sub>1</sub> [inch]	[mm]	d <sub>1</sub>	d <sub>2</sub>	e	l <sub>max</sub>	k <sub>max</sub>	g <sub>max</sub>	[kN <sub>min</sub> ]*	*[kg/m]	Bestell Nr.	Versch. Glieder	Part No.	
	3/8 x 7/32	9,525 x	5,72	6,35	3,28	10,24	23,4	3,3	8,2	11,7	0,78	300-102-600	-601	-641
	1/2 x 5/16	12,7 x	7,75	8,51	4,45	13,92	31,0	3,9	11,81	17,4	1,35	300-202-600	-601	-641
	5/8 x 3/8	15,875 x	9,65	10,16	5,08	16,59	36,2	4,1	14,73	29,0	1,85	300-302-600	-601	-641
	3/4 x 7/16	19,05 x	11,68	12,07	5,72	19,46	42,2	4,6	16,13	34,0	2,50	300-402-600	-601	-641



[kN<sub>min</sub>]\*: Bruchkraft | breaking load

\* [kg/m]: Gewicht per Meter | weight per meter