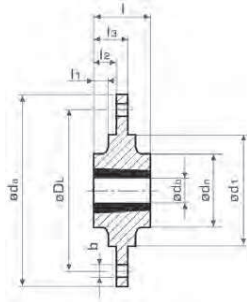


## Anbaunaben für Klemmbuchsen Bolt on Hubs for Taper Bushes

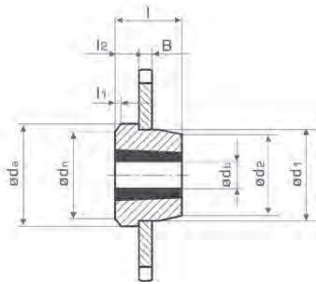


Material  
material

GG 25  
cast iron

$d_a$	$D_L$	$d_1$	$d_n$	$l$	$l_1$	$l_2$	$l_3$	$b$	$L^*$	[kg]	für Klemmbuchsen for taper bushes	Bestell Nr. Part No.
180	135	90	75	25	6,75	9,25	15,75	7,5	6	1,8	295-121-011...032	295-121-002
200	150	110	85	38	12,75	15,25	22,25	7,5	6	2,2	295-161-514...542	295-161-502
270	190	140	110	32	9,25	11,75	20,25	9,5	6	4,35	295-201-214...250	295-201-202
340	240	170	125	45	14,75	17,25	26,75	11,5	8	8,8	295-251-716...760	295-251-702
430	300	220	160	51	16,25	18,75	32,25	13,5	8	19,2	295-302-025...075	295-302-002
485	340	250	160	51	15,75	18,25	31,75	13,5	8	26,0	295-302-025...075	295-302-102

## Einschweißnaben für Klemmbuchsen Weld on Hubs for Taper Bushes



Material  
material

Stahl: 1.0503 [C45]  
steel: 1.0503 [C45]

K



$d_a$	$d_1^{hb}$	$d_2$	$d_n$	$l$	$l_1$	$l_2$	$B$	[kg]	für Klemmbuchsen for taper bushes	Bestell Nr. Part No.
70	60	60	65	25	7	9	10	0,275	295-121-011...032	295-121-003
83	70	68	76	38	10	16	11	0,55	295-161-514...542	295-161-503
127	110	108	117	44	10	19	13	1,75	295-251-716...760	295-251-703
152	130	125	140	76	13	25	19	3,4	295-303-030...075	295-303-003
184	155	151	168	89	16	32	25	6,7	295-353-535...590	295-353-503

L\*: Lochzahl | number of holes